



ANATOM 64 Clarity

Precision Technology Platform



Insight into life

Shenzhen Anke High-tech Co., Ltd.

Address: Block B, LingYa Industrial Zone, Tangtou No.1 Road,
Bao'an District, Shenzhen, 518108, P.R. China

Tel: +86-755-21622518 26688889

Fax: +86-755-26695307 26685908

Email: anke@anke.com

Website: www.anke.com

Follow us on:



ANKE(@ankeint)



ANKE(@ankemri)



ANKE(@ankemarcom)



Shenzhen Anke High-tech Co., Ltd



Precision Technology Platform **ANATOM 64 Clarity**

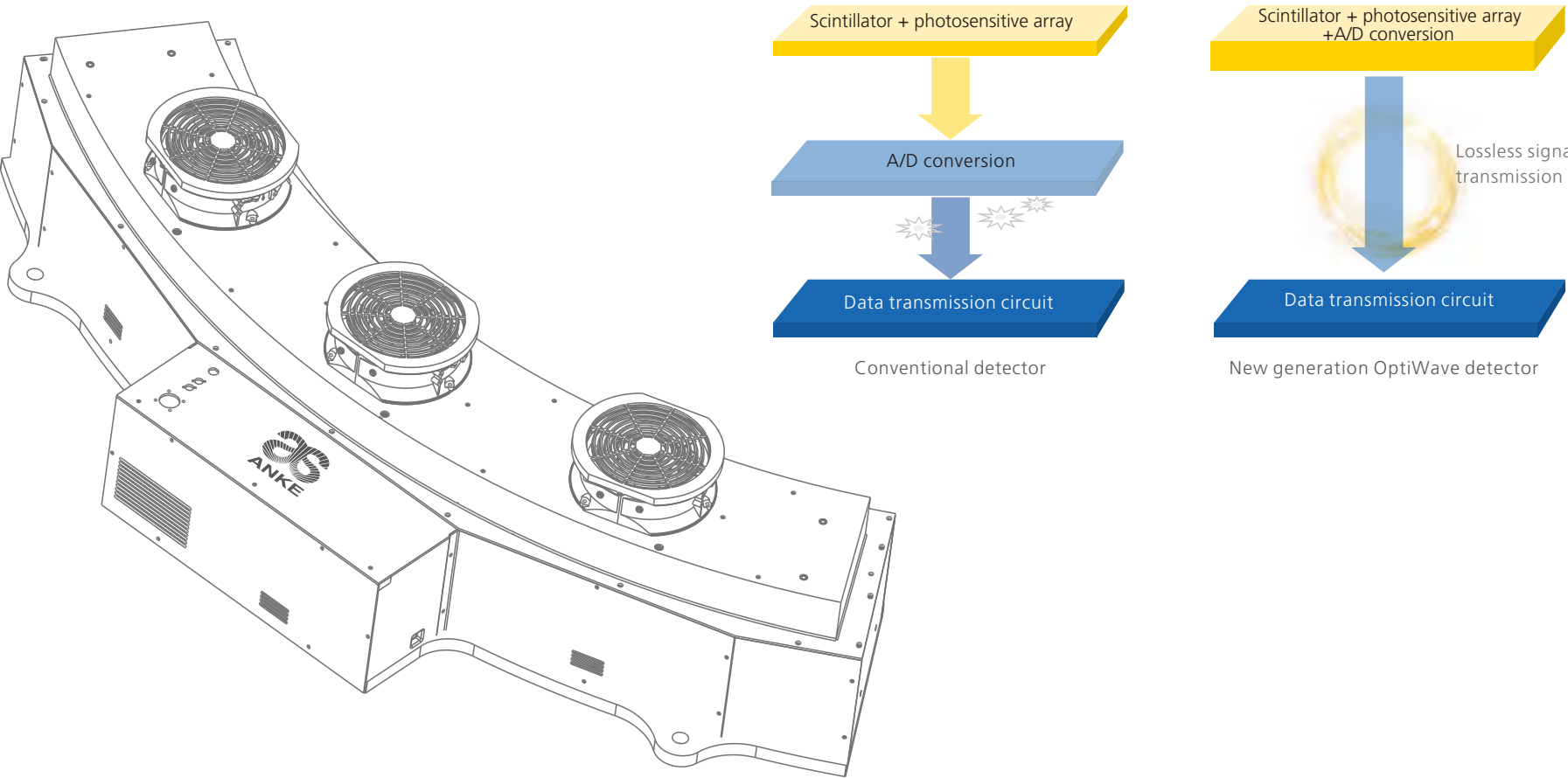
Precision medicine is the emerging future of disease diagnosis, treatment and prevention based on individual patient information. Medical imaging technologies, which provide precise diagnosis information, are crucial parts in precision medicine.

Following the breakthroughs in the medical system development, Anke proudly introduces the creatively designed ANATOM 64 Clarity, as a tool of precision medicine in diagnosis imaging. Via the breakthrough designs in precise hardware software and imaging technologies, ANATOM 64 Clarity can provide precise diagnosis information and early detection for small lesions.

Precision Technology Platform

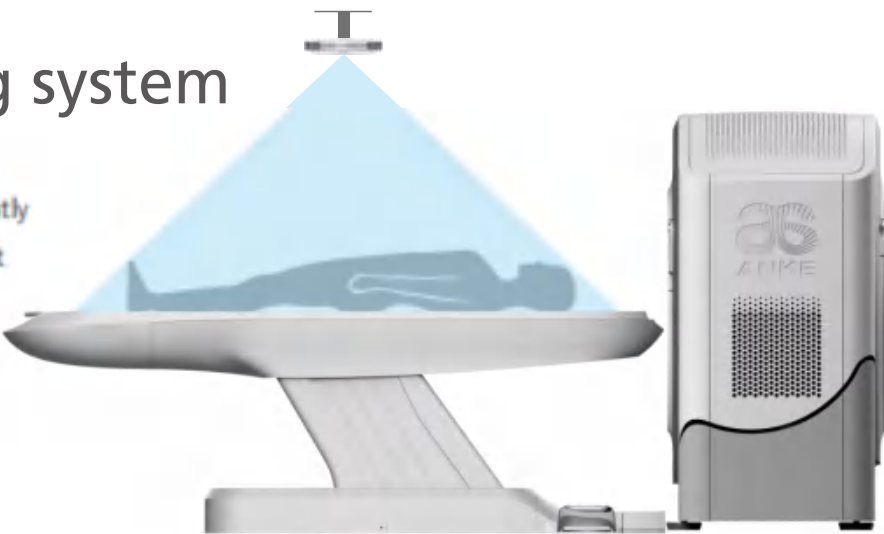
The newly designed ANATOM 64 Clarity adopts the world leading technologies inherited from precision technology platform. The latest new generation OptiWave detector and innovative precision fast scanning technology are combined with Admir^{3D} iterative technology to achieve lower dose and lower consumption but higher image quality.

New generation OptiWave detector



* Sky-eye intelligent positioning system

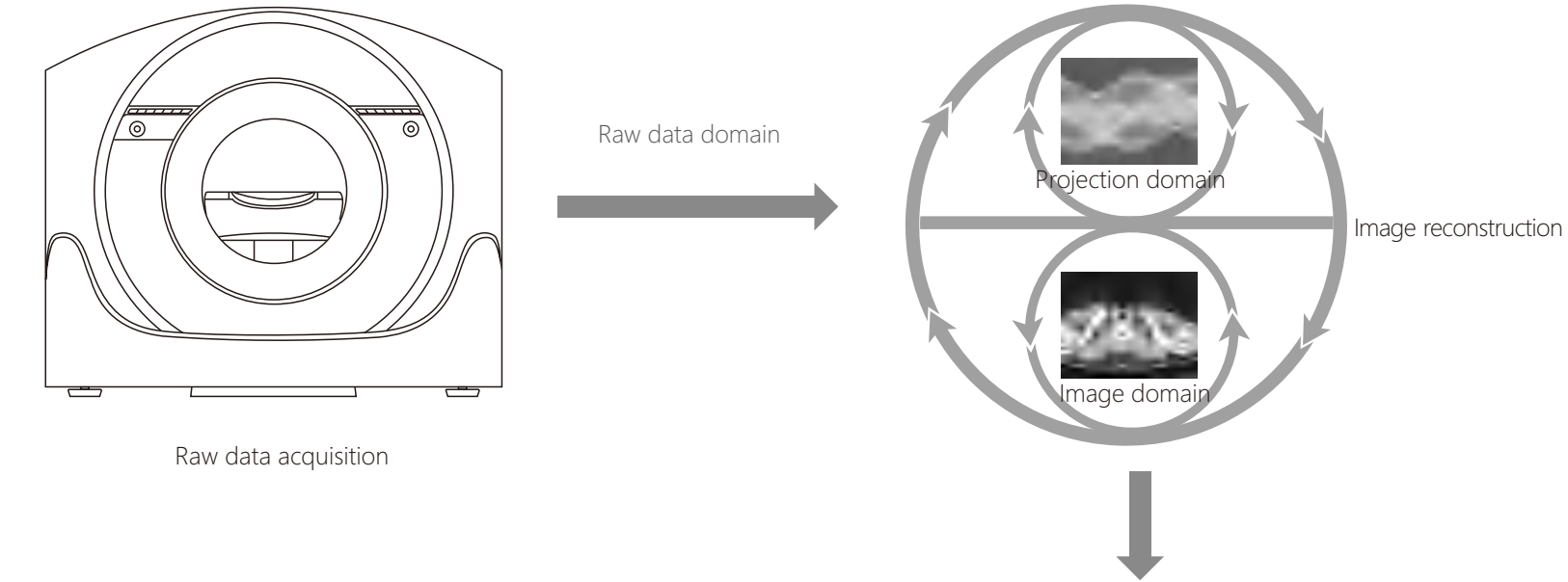
Using HD camera combined with auto-positioning technology, "Sky eye" can greatly improve efficiency on the whole scanning workflow which realizes fully intelligent scanning and navigation functions like auto-positioning, adaptive scout field selecting and protocol assisting.



*Eagle-eye patient monitoring system

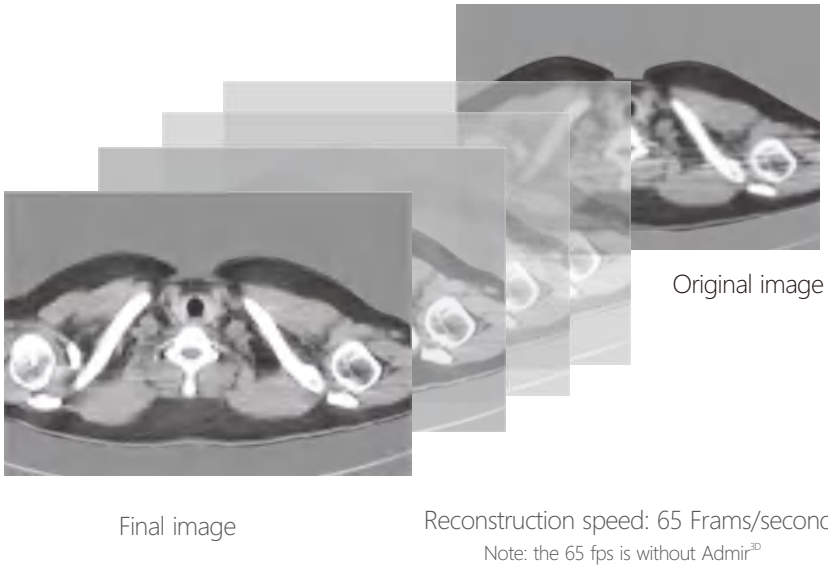
The gantry integrated HD camera not only monitors the patient's status from console at all times, but also determines the best time to execute exposures.





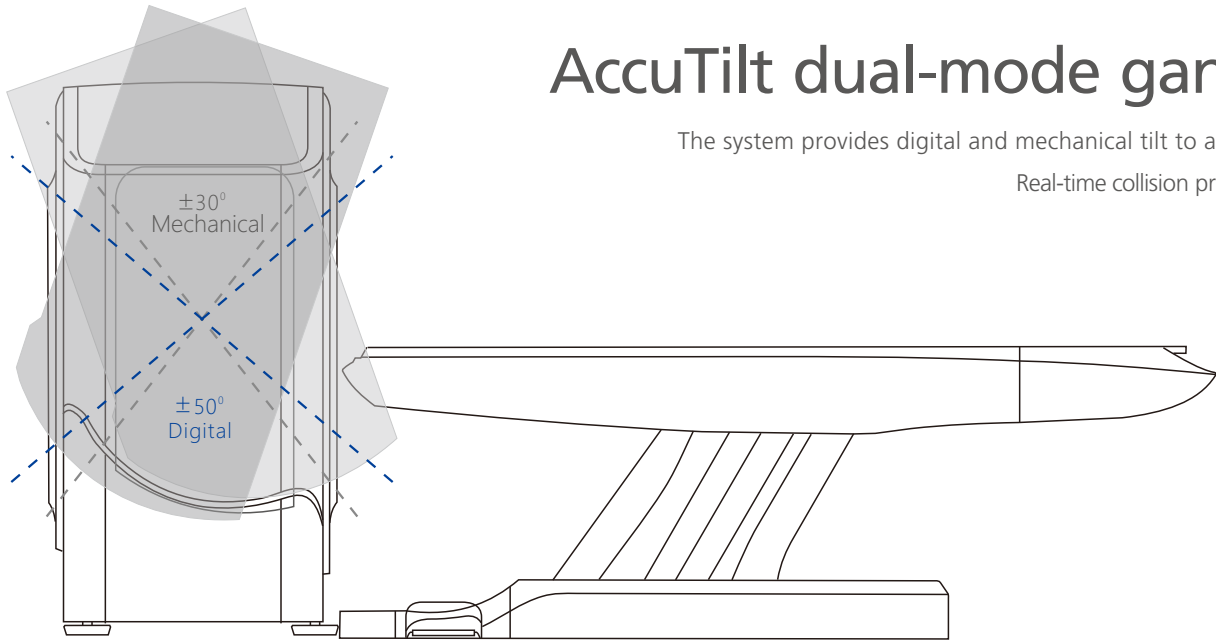
Admir^{3D} iterative reconstruction technology

Admir^{3D} applies mathematical and physics models to accurately construct and describe the signal's quantum characteristics. Iterative operations are performed in the three domains of raw data, projection and image, to greatly reduce the image noise and achieve optimal image quality with low dose.



Precise hardware, Precise technology, Precise imaging

- New generation OptiWave detector
- High precision gantry control
- Dual-mode gantry tilt
- Admir^{3D} iterative technology
- AccuSpin dual-energy imaging
- 1024 x1024 matrix imaging technology
- High-definition imaging of targeted organs
- Low dose platform
- 3D enhanced VR



AccuTilt dual-mode gantry tilt technology

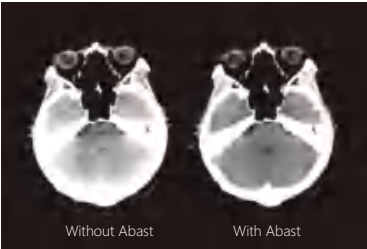
The system provides digital and mechanical tilt to accommodate different user habits and clinical needs.
Real-time collision preventing system is available for the patients' safety

AccuOrgan-Targeted organ imaging

To achieve high precision imaging of each part of human body at low dose and low energy consumption

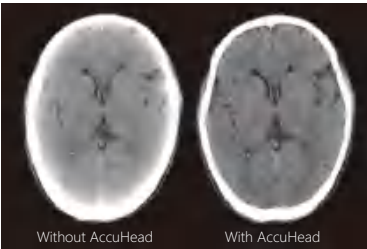
Abast-Bone artifact suppression technology

Abast eliminates the X-ray beam hardening effects to the cerebellum, brain stem and other parts of the brain and clearly shows the structure and lesions of the brain stem and cerebellum.



AccuHead-Gray & white matter enhancement technology

AccuHead technology is specifically designed for brain scans to improve the contrast between gray matter and white matter without sacrificing image quality.



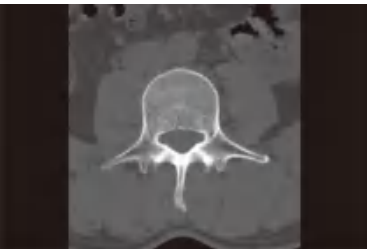
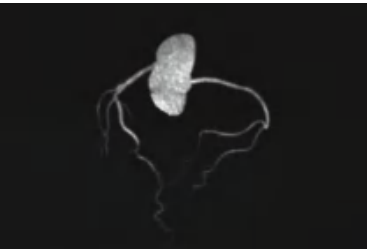
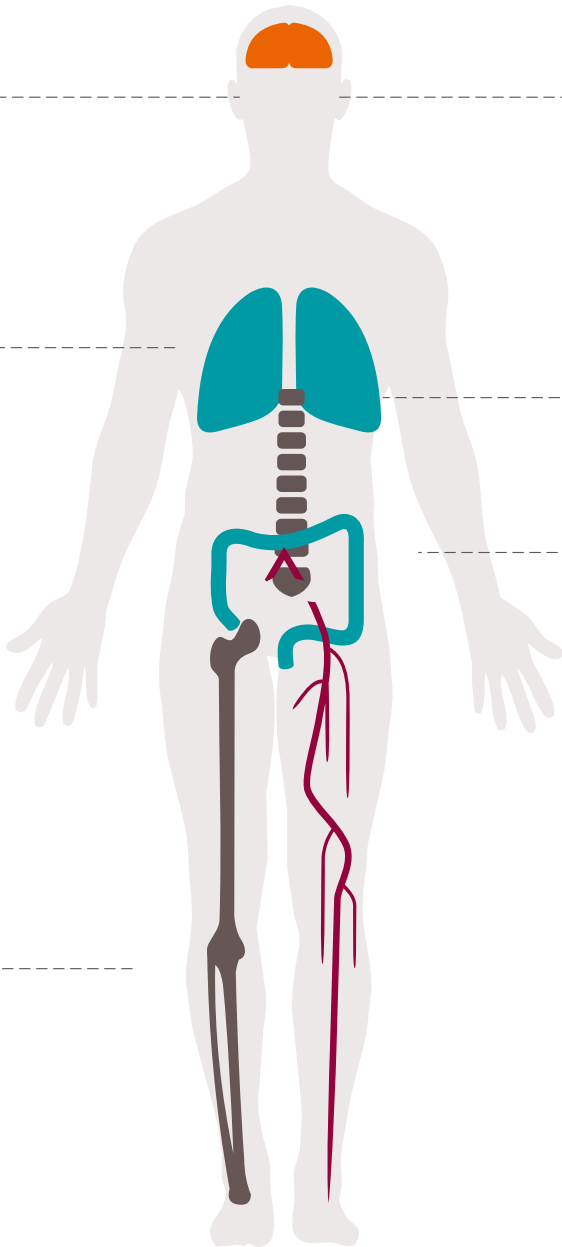
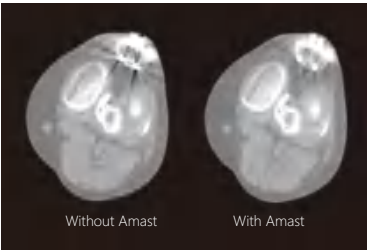
AccuOrgan-High resolution lung imaging

High resolution images of the lung can be obtained at only 30%~40% of conventional radiation dose



Amast-Metal artifact suppression

Dual-domain iteration is adopted to effectively remove metal artifacts and restore the soft tissue around the metal



Acculmage-Microscopic imaging technology

1024x1024 matrix to display more details of the pathological changes and provide a reliable information for early detection, early diagnosis and early treatment of the diseases

Aheart-Coronary angiography

Innovative ECG gated trigger and real-timedynamic tube current modulation are applied to achieve low dose HD coronary angiography, which can clearly reveal the fine structure of coronary arteries

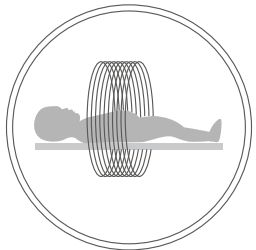
AccuBone-High resolution bone imaging

Enhanced bone edge contrast can provide accurate anatomic relationships and show early destruction and cyst of subchondral bone like lesions and articular cartilage calcifications

AccuOrgan-Body high resolution imaging

Combined with the Acculmage microscopic imaging technology, AccuOrgan technology can significantly increase the display of fine structure and morphology of the abdomen and provide more accurate images for the early diagnosis of small lesions

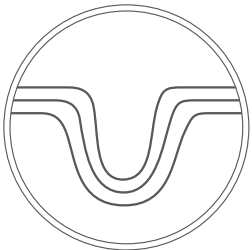
AccuDose-Comprehensive low dose imaging



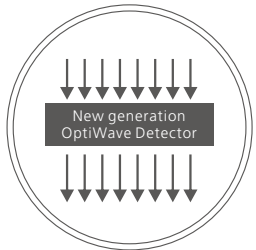
Pediatric Scan Protocol



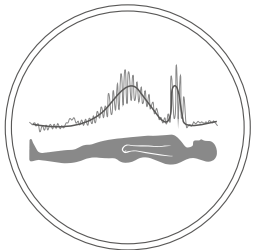
Individual Dose Monitoring



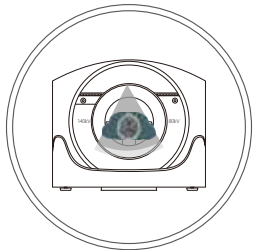
AccuShape Filter



Efficient Detector



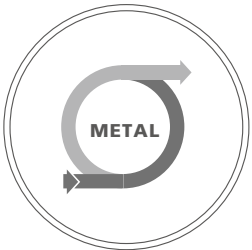
Adose Dose Modulation



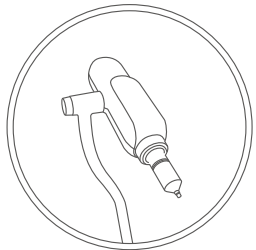
AccuSpin



Iterative Reconstruction



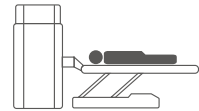
Amast



Contrast Agent Tracking Technology

AccuScan-Enjoy ease

Convenient and efficient operation process greatly improve work efficiency to achieve high volume of patients



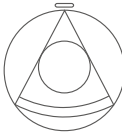
AccuOrientation

Preset intelligent positioning procedures to enable one-button accurate patient positioning



AccuEmergency

Skip patient registration for emergency scansto save time



AccuScanning

Carefully designed default scan protocols help to get high quality images with ease



AccuTracing

Automatic bolus tracking to trigger the scan for precise scan timing



AccuReconstruction

Up to 65 frms / sec real-time reconstruction

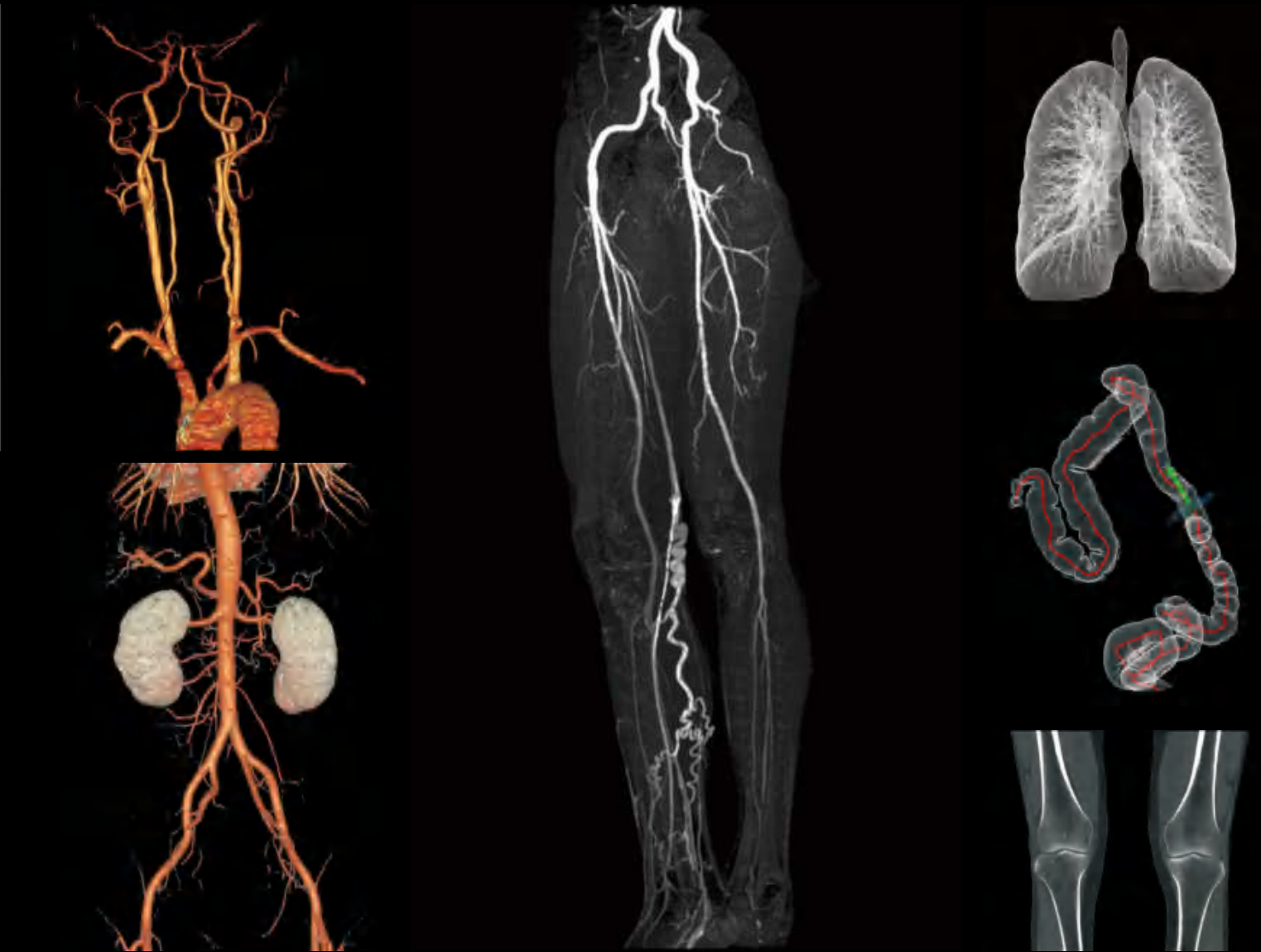
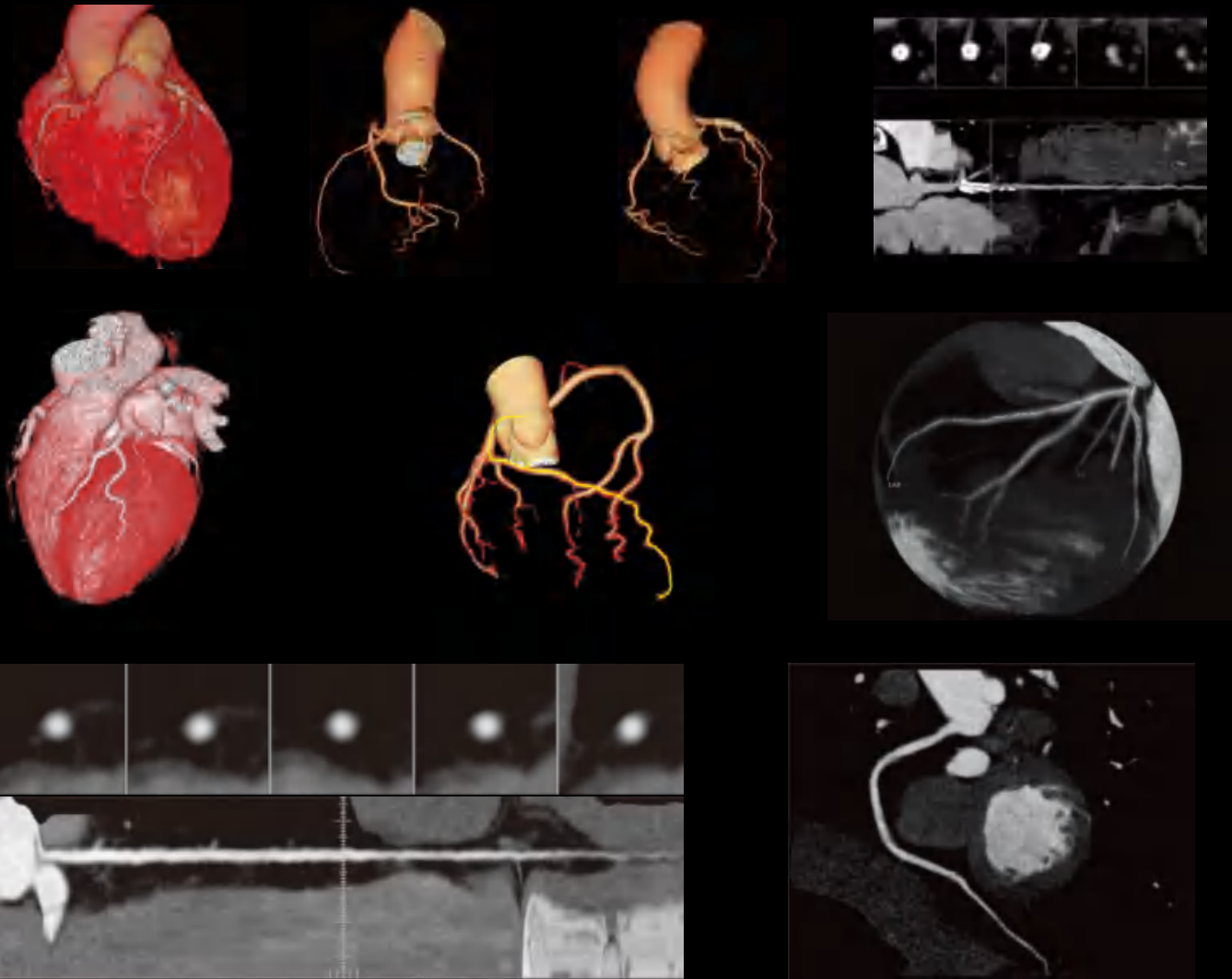


AccuPrinting

Intelligent typesetting and quick printing to save time

Clinical Applications

Fast, precise and low-dose imaging technologies provide a full range of clinical solutions to meet the current and future clinical diagnostic needs



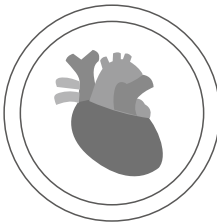
From the moment you choose ANKE, our all-round cooperation begins. Once you are in ANKE's global customer service system, you will experience a complete service solution that is all you expect, all you want and all you need.

Comprehensive CCTA Solution

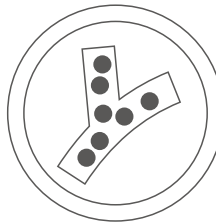
Perfect for patients with high heart rates and complex rhythms, enabling CCTA imaging at ultra-low doses and low contrast dosages



AccuPitch coronary adaptive pitch



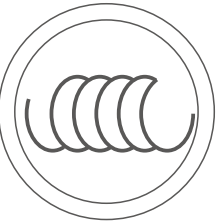
AccuGating intelligent gating CCTA imaging



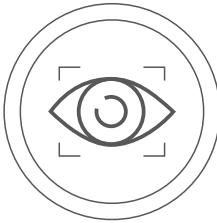
Aheart intelligent low-dose CCTA image



AccuCardio prospective scan for arrhythmia



Large pitch HD CCTA imaging



AccuTracking intelligent coronary artery tracking



Parameters self-adaptive CCTA imaging



Prospective ECG gating scan



Service Platform

- 24-hour call centre service
- Spare parts guarantee in the spare parts centre
- Professional tools for efficient ensurance



Service Quality

- One-to-one service by technical experts
- Preventive maintenance
- Timely detection of hidden problems



Service Network

- Over 100 engineers
- Over 30% technical experts
- R&D-led technical support centre



Service Efficiency

- Remote support
- Fast problem solving
- Efficient dispatch to reduce time